



Name: _____

Date: _____

PARASHAT NOACH – NOAH (YEAR 1)

B'reisheet (Genesis) **6:9-8:14** / 8:15-10:32 / 11:1-32

1) With whom did Noah walk? (B're. 6:9)

2) How long is the Ark to be? (B're. 6:15)

3) Who is going to destroy every living thing that breathes? (B're. 6:17)

4) How old was Noah when the water flooded the earth? (B're. 7:6)

5) How many days and nights did rain fall? (B're. 7:12)

6) How many sons accompanied Noah into the Ark? (B're. 7:13)

7) It was after how many days did the water went down? (B're. 8:3)

8) What type of bird did Noah send out to see if the water had gone from the surface of the ground? (B're. 8:8)

9) What did the dove return with? (B're. 8:11)

10) In what year had the water dried up from off the earth? (B're. 8:13)

Yeshayahu (Isaiah) 54:1-6 / 54:7-17 / 55:1-5

1) What should a barren woman who has never had a child do? (Yesh. 54:1)

2) What should be made firm? (Yesh. 54:2)

3) Who will possess the nations? (Yesh. 54:3)

4) Your husband is your what? (Yesh. 54:5)

5) According to the verse, how was the spirit of the person whom Yahweh called? (Yesh. 54:6)

Find the 7 differences.



1) What did Zekaryah and Elisheva both observe? (Luq. 1:6)

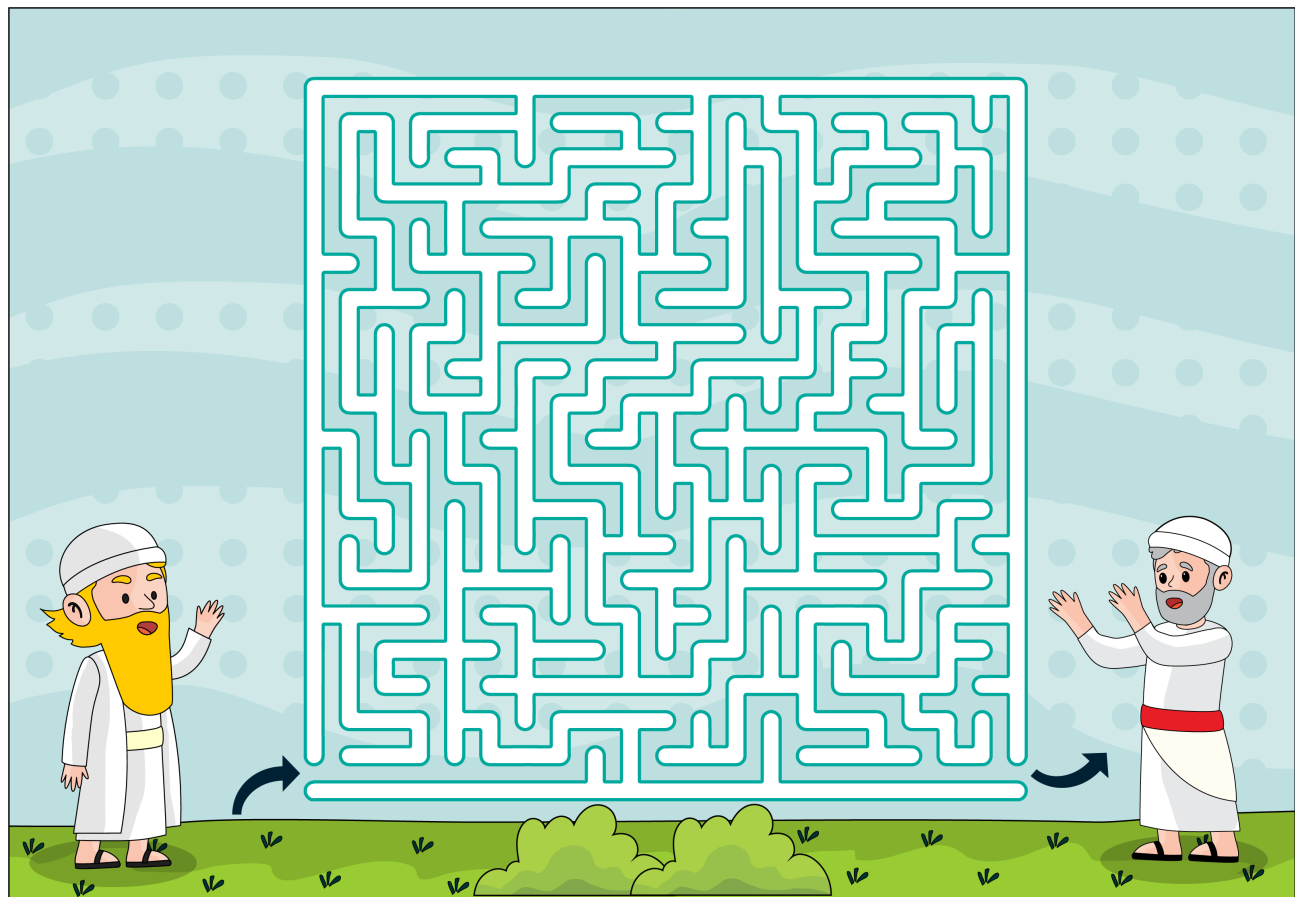
2) Who appeared to Zekaryah? (Luq. 1:11)

3) What name is Zekaryah's son to be given? (Luq. 1:13)

4) What is the name of the messenger (angel)? (Luq. 1:19)

5) Who conceived following the visit from the messenger of Yahweh? (Luq. 1:24)

The messenger Gabriel wants to reach Zechariah to bring him the good news. Help him make his way through the maze.





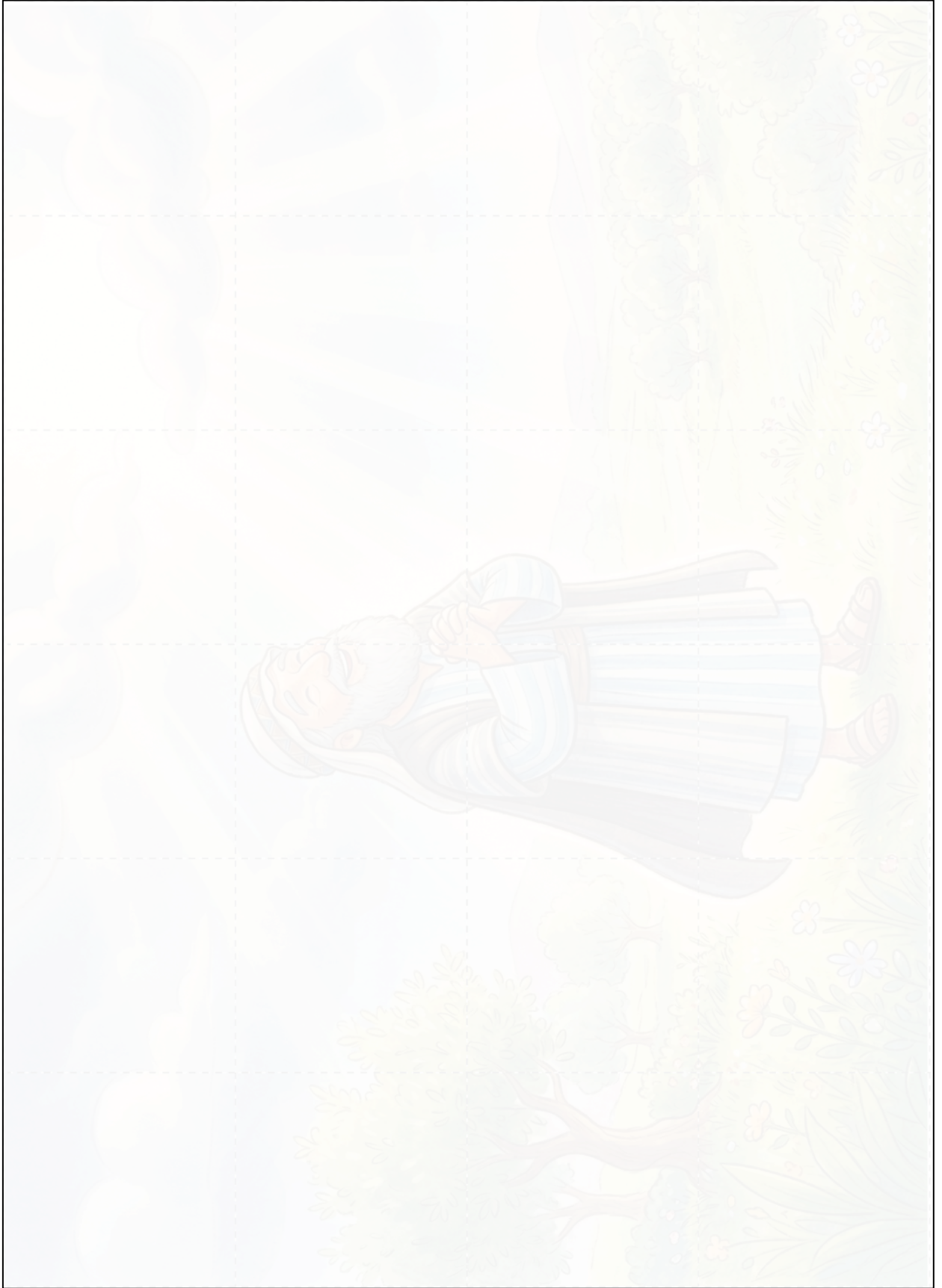
WORDSEARCH: PARASHAT NOACH

S	W	F	Z	M	X	L	F	T	N	Y	B	K	O	Q	P	M	B	H	M	J	D	S	I	R
C	B	V	Q	N	D	N	G	U	S	P	N	I	L	F	R	W	I	Y	G	V	V	G	X	L
J	O	U	B	N	F	M	H	B	N	Z	G	R	Q	S	T	J	X	L	T	A	P	N	Y	I
X	J	Z	W	S	C	R	I	C	V	Y	T	Q	S	Y	P	F	P	N	T	I	M	W	C	T
Z	L	Q	R	O	S	U	N	X	V	E	J	C	J	O	R	X	D	M	E	T	C	E	W	F
A	Y	A	W	H	K	N	J	O	N	N	L	U	F	Q	A	D	N	X	Q	B	T	F	N	V
W	B	H	P	C	E	T	D	R	B	T	A	R	D	N	U	B	M	B	W	K	O	L	T	A
D	A	F	G	B	Y	J	A	P	R	V	B	M	M	G	N	C	B	L	R	X	J	P	Y	O
S	C	B	B	T	A	O	A	C	D	T	X	S	V	T	E	L	Q	E	B	D	C	A	C	W
F	I	H	N	P	T	R	W	U	Y	O	P	Z	X	Q	F	W	R	S	Z	K	E	I	Q	P
K	D	U	I	X	N	P	W	S	S	I	M	E	T	Z	L	U	X	Z	K	F	H	V	C	I
A	X	T	K	O	A	E	U	M	B	H	G	I	Y	A	H	N	S	Q	F	C	S	T	W	M
V	N	L	R	C	N	Y	S	F	N	T	V	T	S	M	T	S	W	F	S	T	O	L	P	I
D	L	A	Y	R	W	T	Q	U	D	Q	N	K	L	T	B	N	X	N	G	H	M	S	B	A
Z	A	S	Y	P	I	F	O	C	K	W	P	D	W	D	D	T	P	N	B	T	C	U	I	Q
V	H	B	Q	J	B	I	S	Z	P	B	Y	O	E	I	K	L	P	D	Q	V	K	O	U	D
A	Y	O	H	F	N	G	M	Z	Y	I	G	G	M	H	C	H	G	D	S	B	X	N	K	W
Q	J	G	L	P	I	A	F	B	C	D	F	H	E	R	G	E	I	N	C	M	K	U	D	N
W	X	F	R	S	L	T	M	K	K	I	B	L	D	S	F	C	X	J	D	P	C	M	C	S
Y	I	V	N	S	P	M	S	Y	G	V	A	P	D	X	D	O	H	L	N	R	Q	C	N	A

- 1
- 2
- 3
- 4
- 5
- 6
- 7

- 8
- 9
- 10
- 11
- 12
- 13
- 14

SET-APART FROM THE DARKNESS



Cut out, mix up, and assemble by gluing the pieces onto the previous page.

