



Name: _____

Date: _____

PARASHAT TERUMAH – OFFERINGS (YEAR 3)

Shemote (Exodus) 25:1-40 / 26:1-30 / **26:31-27:19**

1) What is made of blue, purple and scarlet yarn and finely woven linen? (Shem. 26:31)

2) What must go inside the curtain? (Shem. 26:33)

3) Which direction in the Tabernacle should the menorah face? (Shem. 26:35)

4) What type of wood is used to make the altar? (Shem. 27:1)

5) What metal are the pots, shovels, basins, meat hooks and fire pans to be made out of? (Shem. 27:3)

6) How far up the altar does the netting reach? (Shem. 27:5)

7) Where did Yahweh show Moshe how to make everything? (Shem. 27:8)

8) How long are the tapestries on the north side of the Tabernacle? (Shem. 27:11)

9) Which parts were silver and which were bronze? (Shem. 27:17)

10) What material is needed for the Tabernacle equipment to be made of? (Shem. 27:19)

Melachim Aleph (1 Kings) 5:1-18 / 6:1-10 / **6:11-38**

1) Who will live among the people of Israel? (Mel. Aleph 6:13)

2) What is the thirty-five-foot back portion of the house known as? (Mel. Aleph 6:16)

3) With what material was the entire house overlaid with? (Mel. Aleph 6:22)

4) What type of wood were the doors to the sanctuary made of? (Mel. Aleph 6:31)

5) How many years were spent building the house? (Mel. Aleph 6:38)

Find the 7 differences.



1) Which two are we to know? (Yoch. 17:3)

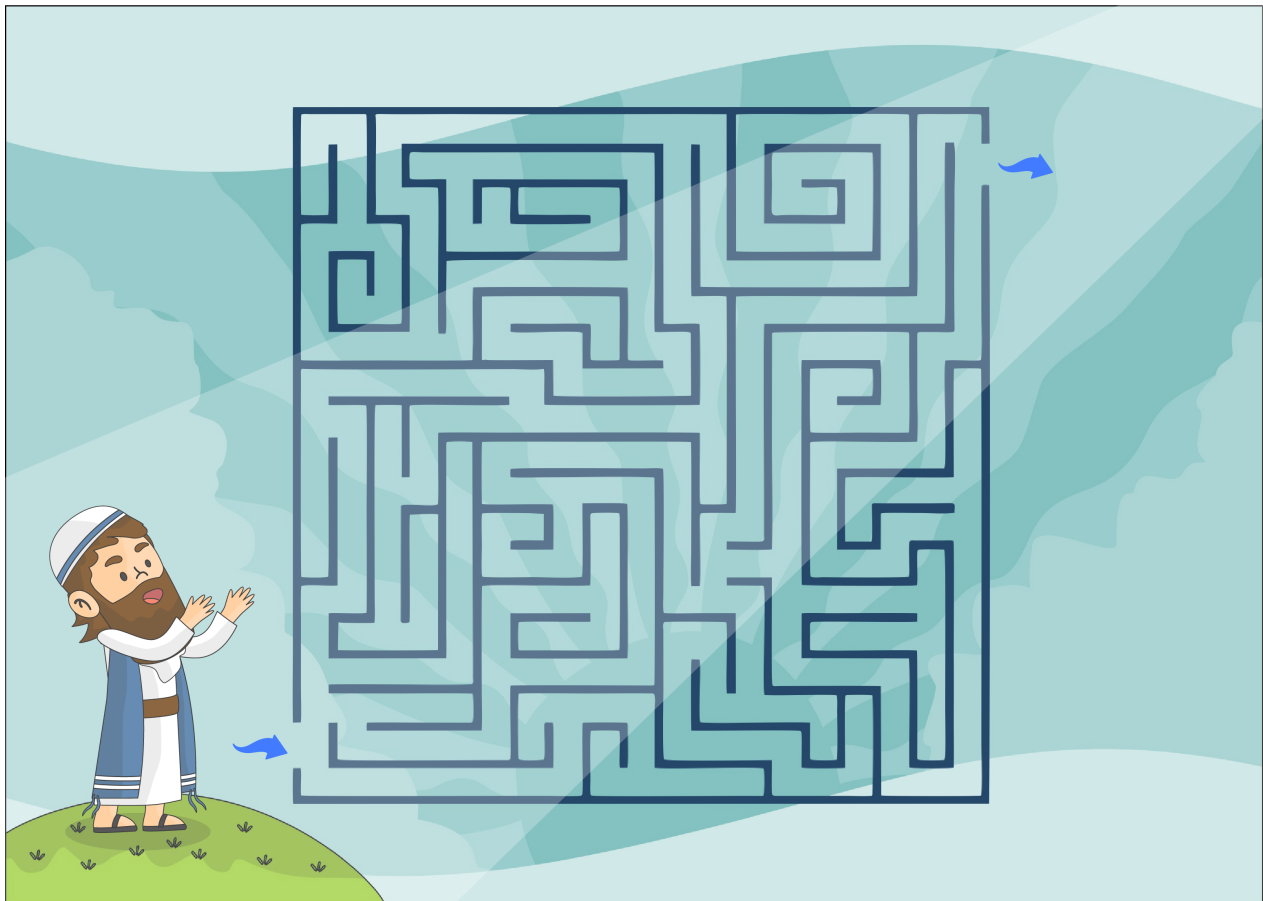
2) To whom has Yahweh given the people of the world? (Yoch. 17:6)

3) What do we not belong to? (Yoch. 17:14)

4) What is Elohim's word? (Yoch. 17:17)

5) With Yeshua's glory, what may we become? (Yoch. 17:22)

Walk the path from Yeshua's prayer to the glory of Father Yahweh.





WORDSEARCH: PARASHAT TERUMAH

S	W	F	Z	M	X	L	F	T	N	Y	B	K	O	Q	P	M	B	H	M	J	D	S	T	C
C	W	V	G	N	D	N	G	B	S	P	N	I	L	F	R	W	I	Y	G	V	V	G	X	U
J	R	O	L	N	F	M	H	B	N	Z	G	R	Q	S	T	J	X	L	T	Z	P	N	Y	R
X	J	Z	O	S	C	R	P	C	V	Y	T	Q	S	Y	P	F	P	N	T	J	M	W	C	T
Z	L	Q	R	D	S	V	N	X	V	E	J	C	J	O	R	X	D	M	L	T	C	E	W	A
A	Y	M	Y	H	K	N	J	C	N	N	L	U	F	Q	S	D	N	X	Q	B	P	F	N	I
W	B	H	P	C	G	T	D	R	B	T	H	R	D	N	L	B	A	B	W	L	I	N	E	N
D	G	F	G	B	Y	J	K	P	R	V	B	M	M	G	N	C	L	L	R	X	L	P	Y	S
S	C	B	B	T	Q	O	J	C	D	T	X	S	V	T	B	L	T	T	B	D	L	Z	C	W
F	I	H	N	P	T	R	W	U	Y	F	P	Z	X	Q	F	W	A	S	Z	K	A	I	Q	P
K	D	U	I	X	N	P	W	S	S	Q	M	C	T	C	O	U	R	T	Y	A	R	D	C	I
A	X	T	K	W	H	D	U	M	B	H	G	B	Y	P	I	N	S	Q	J	Z	S	T	W	M
V	N	L	R	C	C	Y	S	F	N	T	V	T	S	M	L	S	W	F	S	T	Q	L	P	L
D	L	C	E	D	A	R	Q	U	D	Q	N	R	E	T	B	N	X	N	G	H	M	S	B	A
Z	B	S	Y	P	V	F	O	C	K	W	E	D	N	D	U	T	B	N	B	T	C	U	I	Q
V	H	B	Q	J	E	W	S	Z	P	B	Y	Z	T	I	N	L	P	L	Q	V	K	S	U	D
N	Y	O	H	F	D	G	M	Z	M	B	G	G	M	H	I	H	G	D	S	B	X	N	K	W
Q	J	G	L	P	C	T	F	A	C	D	F	H	Z	R	T	O	S	E	T	A	P	A	R	T
W	X	F	R	S	L	T	H	K	K	I	B	L	D	S	Y	C	X	J	D	P	C	M	C	S
Y	K	V	N	S	P	C	S	Y	G	F	M	P	D	X	D	O	H	L	N	R	Q	C	N	V

- ☐ Curtains
- ☐ Linen
- ☐ Pillars
- ☐ Courtyard
- ☐ Altar
- ☐ Oil
- ☐ Wood

- ☐ Cedar
- ☐ Carved
- ☐ Chambers
- ☐ Glory
- ☐ Unity
- ☐ To set apart
- ☐ Sent

PREPARING THE SET-APART PLACE

