



## PARASHAT HA'AZINU – LISTEN (YEAR 2)

Devarim (Deuteronomy) 32:1-32:12 / **32:13-39** / 32:40-52

1) What did the blood of grapes produce? (Dev. 32:14)

---

2) What did the people sacrifice to? (Dev. 32:17)

---

3) What type of generation were the people? (Dev. 32:20)

---

4) Where does Yahweh's anger burn down to? (Dev. 32:22)

---

5) What did Elohim consider doing to Israel? (Dev. 32:26)

---

6) What do our enemies lack that we have? (Dev. 32:31)

---

7) What does the wine taste like? (Dev. 32:33)

---

8) For whom is Vengeance and payback? (Dev. 32:35)

---

9) Who is Elohim going to take pity upon? (Dev. 32:36)

---

10) Who is there no elohim beside? (Dev. 32:39)

---

## Shemuel Bet (2 Samuel) 22:1-17 / **22:18-35** / 22:36-51

1) Why did Elohim reward David? (Shem. Bet 22:21)

---

2) From what did David not depart? (Shem. Bet 22:23)

---

3) What does Elohim do to the haughty? (Shem. Bet 22:28)

---

4) Who is the Rock? (Shem. Bet 22:32)

---

5) Who is David's strength and protection? (Shem. Bet 22:33)

---

Find the 7 differences.



1) How should the brothers minds and purposes be? (Cor. Aleph 1:10)

---

2) What has happened to some of Chloe's people? (Cor. Aleph 1:11)

---

3) Who was put to death on the stake? (Cor. Aleph 1:13)

---

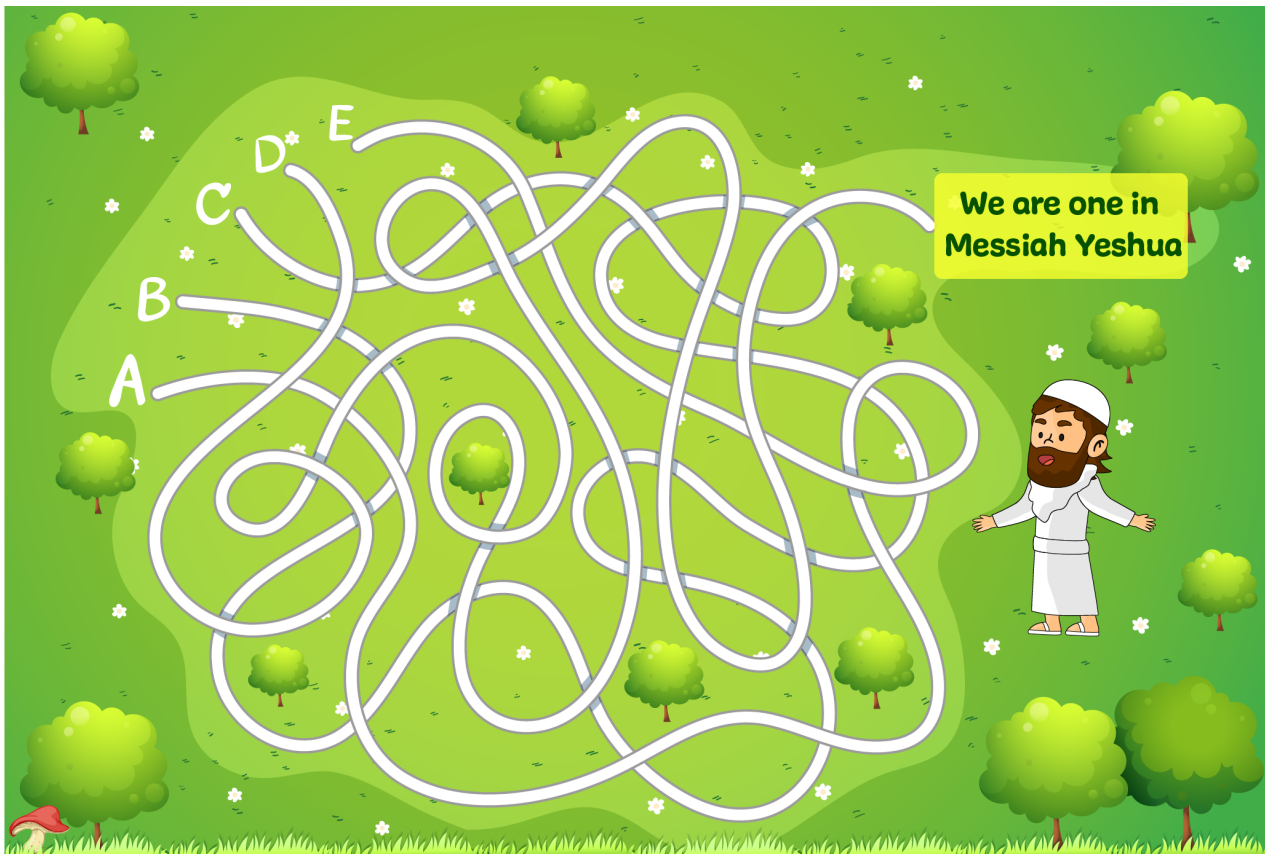
4) Whose name should be used during immersion? (Cor. Aleph 1:14)

---

5) Why must we not rely on "wisdom" to proclaim the Good News? (Cor. Aleph 1:17)

---

Find the correct path to the exit of the maze. Remember, only one path is right, and if you stray, you can try again! Remember that we must always stay **united** in the same **mind** in Yeshua.





## WORDSEARCH: PARASHAT HA'AZINU

S	W	F	Z	M	X	L	F	T	N	Y	B	K	O	Q	P	M	B	H	M	J	D	S	T	R
C	B	V	Q	N	U	N	I	T	Y	P	N	I	L	F	R	W	I	Y	G	V	V	G	X	L
J	R	P	B	N	F	M	H	B	N	Z	G	M	Q	S	T	J	X	L	T	Z	P	N	Y	I
X	J	S	W	S	C	R	P	C	V	Y	T	M	S	Y	P	F	P	N	W	J	M	W	C	D
Z	L	A	R	J	S	V	N	X	M	E	J	E	J	O	R	X	D	M	R	T	C	E	W	I
A	Y	L	W	H	K	N	J	C	O	N	L	R	F	Q	O	D	N	X	A	B	T	F	N	V
W	B	M	P	C	G	T	D	R	U	T	H	S	D	N	C	B	M	B	T	K	Q	L	T	I
D	G	F	G	B	Y	J	K	P	N	V	B	I	M	G	K	C	B	L	H	X	J	P	Y	S
S	C	B	B	T	Q	O	J	C	T	T	X	O	V	T	S	L	Q	T	B	D	C	Z	C	I
F	I	H	N	P	T	R	W	U	A	F	P	N	X	Q	F	W	R	S	Z	K	E	I	Q	O
K	D	U	I	X	N	P	W	S	I	Q	M	C	S	H	I	E	L	D	K	F	H	V	C	N
A	S	T	R	E	N	G	T	H	N	H	G	B	Y	P	H	N	S	Q	J	Z	S	T	W	S
V	N	L	R	C	N	Y	S	F	S	T	V	T	S	M	T	S	W	F	S	T	Q	L	P	L
D	L	C	Y	R	W	T	Q	U	D	P	R	A	I	S	E	N	X	N	G	H	M	S	B	A
Z	B	S	Y	P	I	F	O	C	K	W	P	D	W	D	L	T	B	N	B	T	C	U	I	Q
V	H	B	Q	J	B	W	S	Z	P	B	Y	Z	E	I	O	L	P	L	Q	V	K	S	U	D
N	Y	O	M	A	N	N	A	Z	Y	B	G	G	M	H	H	H	R	E	F	U	G	E	K	W
Q	J	G	L	P	C	T	F	B	C	D	F	H	Z	R	I	Q	T	N	C	M	K	U	D	N
W	X	F	R	S	L	T	M	K	K	I	B	L	D	S	M	C	X	J	D	P	C	M	C	S
Y	K	V	N	S	P	M	W	I	S	D	O	M	D	X	D	O	H	L	N	R	Q	C	N	V

- Manna
- Mountains
- Rocks
- Praise
- Wrath
- Elohim
- Psalm
- Strength
- Shield
- Refuge
- Unity
- Divisions
- Wisdom
- Immersion



# The Rock of Salvation and Judgment

