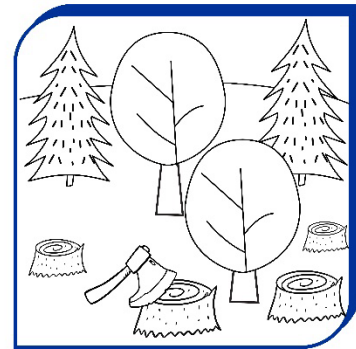
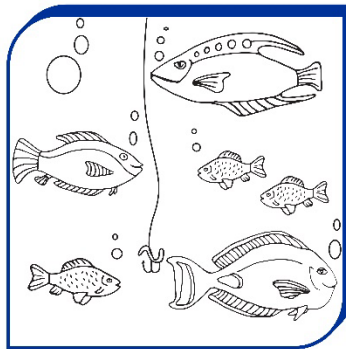
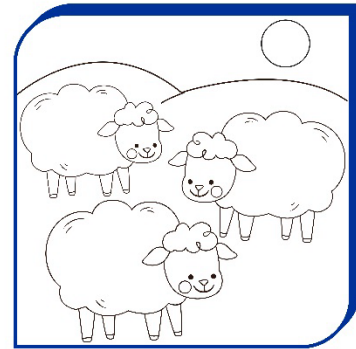
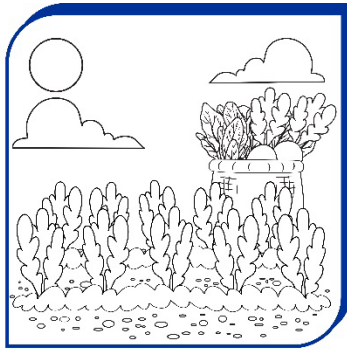




Adam's descendants

Then she bore his brother Abel. And Abel was a keeper of sheep, and Cain was a tiller of the ground. **B'reisheet (Genesis) 4:2**

According to the verse, write the name that corresponds to each character.



Ask an adult to read aloud **B'reisheet (Genesis) 4 and 5** and listen carefully.

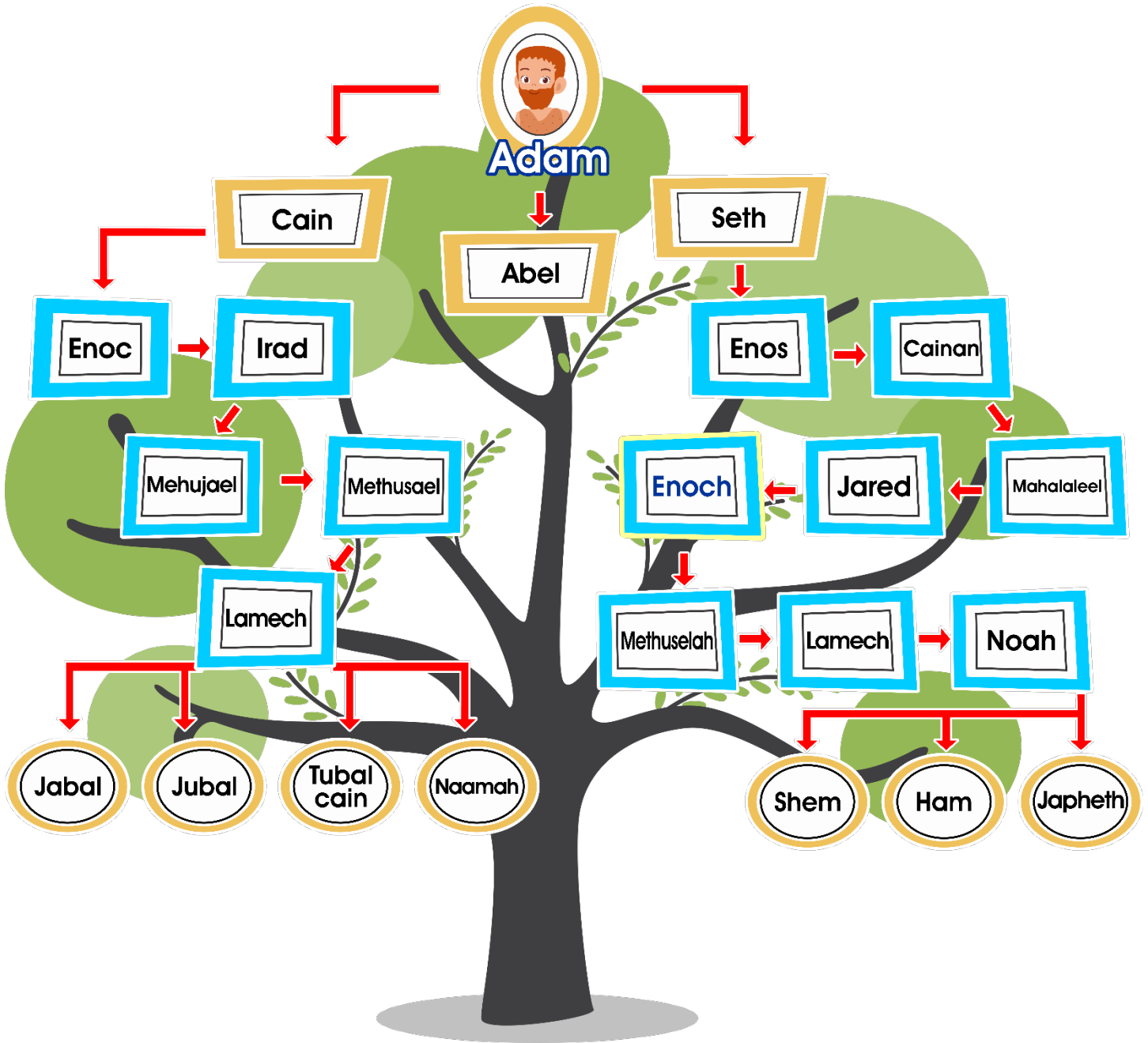
*Put a red line through the job that each of the brothers did.

*Paint only the correct answer, Who strove to give his best to Yahweh?

*Answer: What must have been Cain's correct attitude when Yahweh did not look with favor on his offering? _____



Very attentive in the reading, with your little finger follow the arrows that show you the descendants of Adam.



Why did Enoch disappear? _____
