



With the help of an adult, read from the Scriptures.
Shemuel Aleph (1 Samuel) 3:1-21

Answer the following questions:

What happened to the word of Yahweh in those days?

Where did Samuel sleep?

Find the answer by placing under each image the letter it starts with and then write it on the line.



Select the correct answer.

How many times did Yahweh call Samuel?

- 1 3 4

Yahweh revealed to Samuel that he would judge Eli, for what reason?

- For not praying For not fasting For not correcting his children

Did Samuel reveal to Eli what Yahweh said?

- Yes No Revealed only a part

Where did Yahweh manifest himself again to Samuel?

- Shiloh Jerusalem Beersheba

Find the 7 differences.

Search here

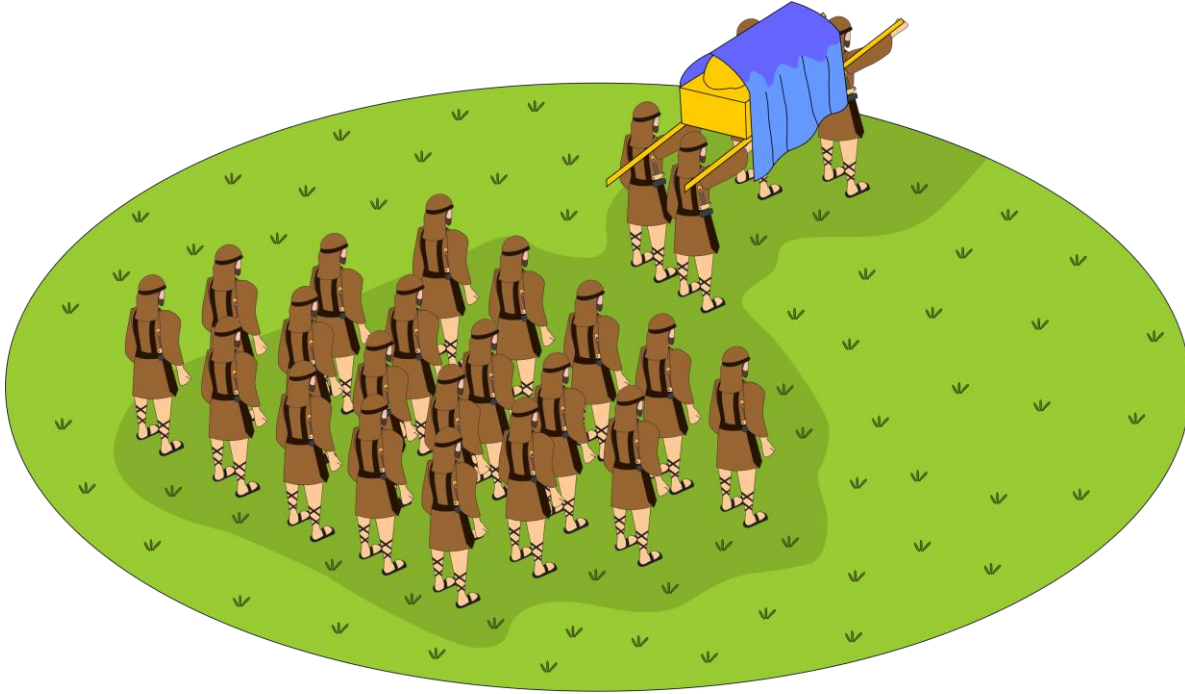


Check here

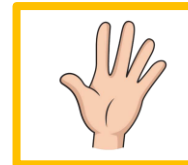
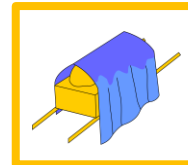




The Philistines capture the ark.

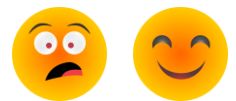


Select the objects found in the image.

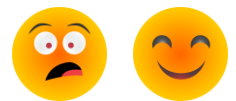


Circle the smiley face if the sentence is correct and the surprised face if it is false.

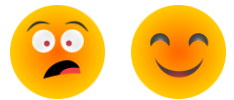
The children of Israel brought the ark of the covenant to Shiloh when they saw that they were being defeated by the Philistines.



Eli's sons, Nadab and Abihu, were with the ark of the covenant of Yahweh.



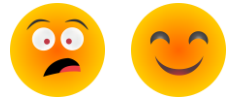
The Philistines were afraid because they said, Elohim has come to the camp.



The Philistines said: Let us give up this battle, for the Hebrews will defeat us and make us their slaves.



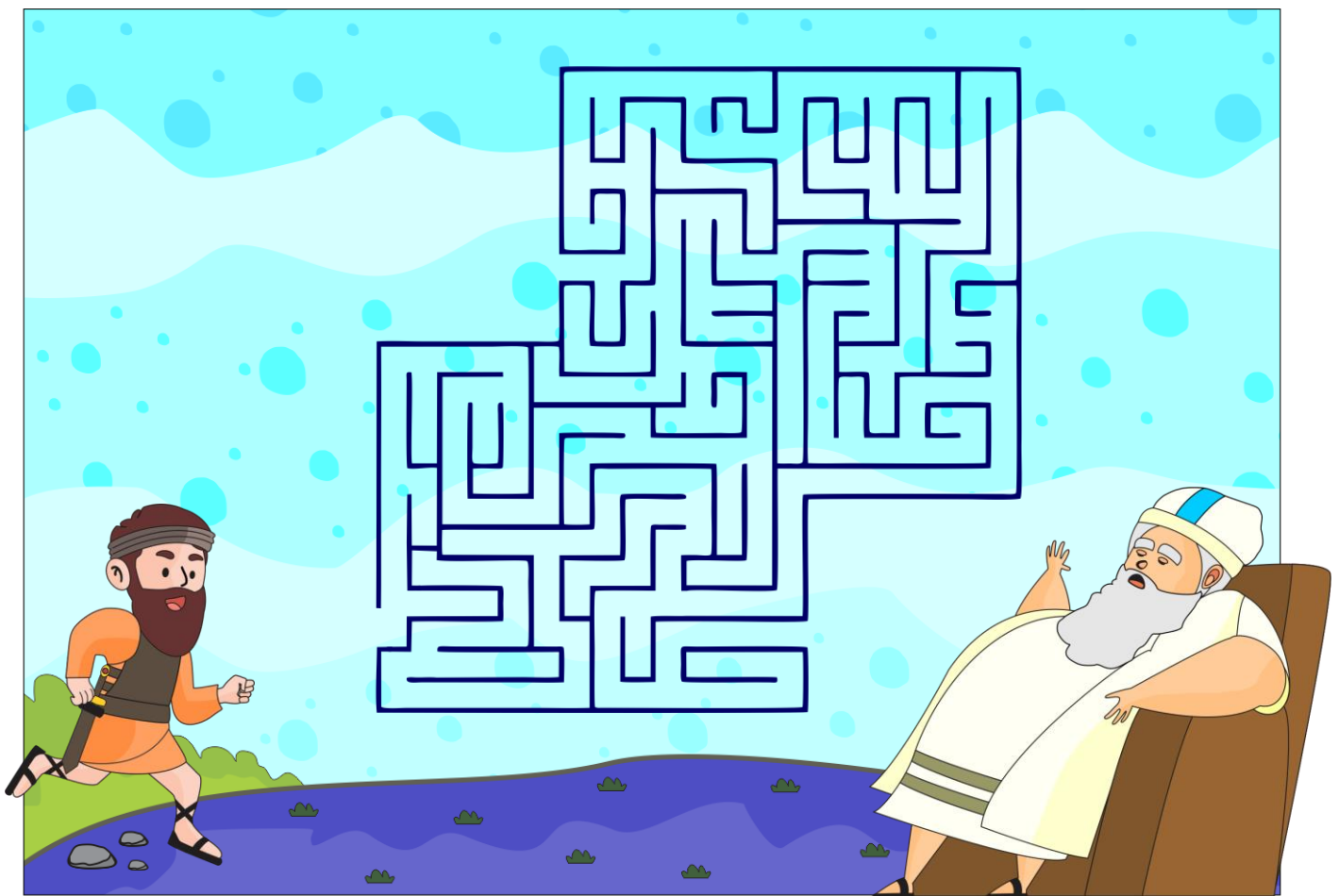
The Philistines took the ark and made great slaughter in Israel.



When Eli heard that his two sons were dead and that the Ark had been taken by the Philistines, he was relieved and said, "Yahweh's will has been done."



A soldier of Israel escaped from the battle with the Philistines, help him get to Eli the priest and give him the message.



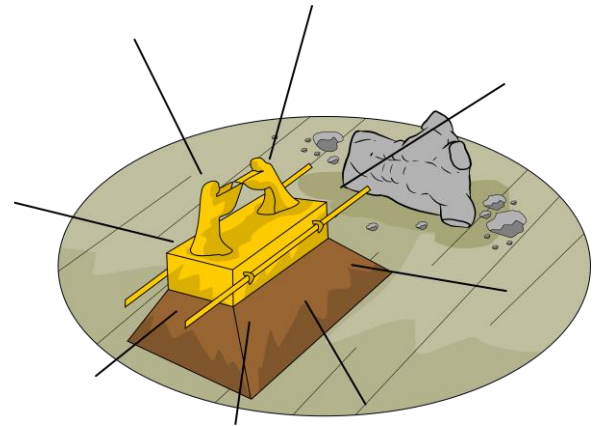


Select the verse that relates to the image.

But the hand of Yahweh was heavy on the people of Ashdod, and He ravaged them and struck them with tumors, both Ashdod and its territory.
Shemuel Aleph (1 Samuel) 5:6

And when they arose early the next morning, there was Dagon, fallen on its face to the ground before the ark of Yahweh. The head of Dagon and both the palms of its hands were broken off on the threshold; only Dagon's torso was left of it.
Shemuel Aleph (1 Samuel) 5:4

And the men who did not die were stricken with the tumors, and the cry of the city went up to heaven.
Shemuel Aleph (1 Samuel) 5:12



With the help of an adult read, **Shemuel Aleph (1 Samuel) 6:1-21**
and circle the correct answer.

The ark was with the Philistines...

- a. 7 months.
- b. 1 year.
- c. 2 months.

The ark should be returned on a...

- a. Young donkey.
- b. New cart carried by two cows.
- c. King Philistine's chariot.

The atonement for stealing the ark was...

- a. Gold tumors and gold mice.
- b. Golden calf.
- c. Gold stones.

The cows took the path of...

- a. Damascus
- b. The Red Sea.
- c. Beth Shemesh

**Now Yahweh came and stood
and called as at other times,
“Samuel! Samuel!” and Samuel
answered, “Speak, for Your
servant hears.”**

Shemuel Aleph (1 Samuel) 3:10

