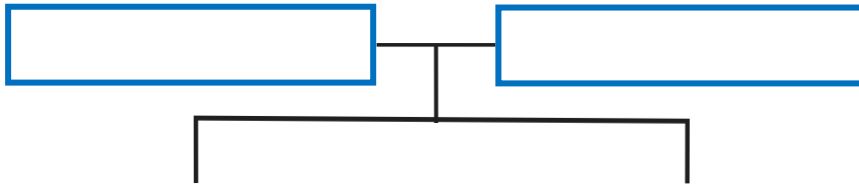




With the help of an adult, read from the Scriptures.
Rut (Ruth) 1:1-22

The name of the man was Elimelech, the name of his wife was Naomi, and the names of his two sons were Mahlon and Chilion Ephrathites of Bethlehem, Judah. And they went to the country of Moab and remained there. **Rut (Ruth) 1:2**

Write the names of this family from Bethlehem of Judah.



Find the hidden word and write it on the lines.



LDCHIREN



UHTR



PAORH

Circle thumbs up if the sentence is correct or thumbs down if it is false.

The name of the man of Bethlehem who went to sojourn in the plains of Moab was Elimelech.



Elimelech's wife's name was Deborah, and they had two sons.



Elimelech died leaving his wife a widow.



Naomi's sons were named Mahlon and Chilion.



Naomi's sons also died along with their wives.



Naomi's daughters were named Ruth and Orpah.



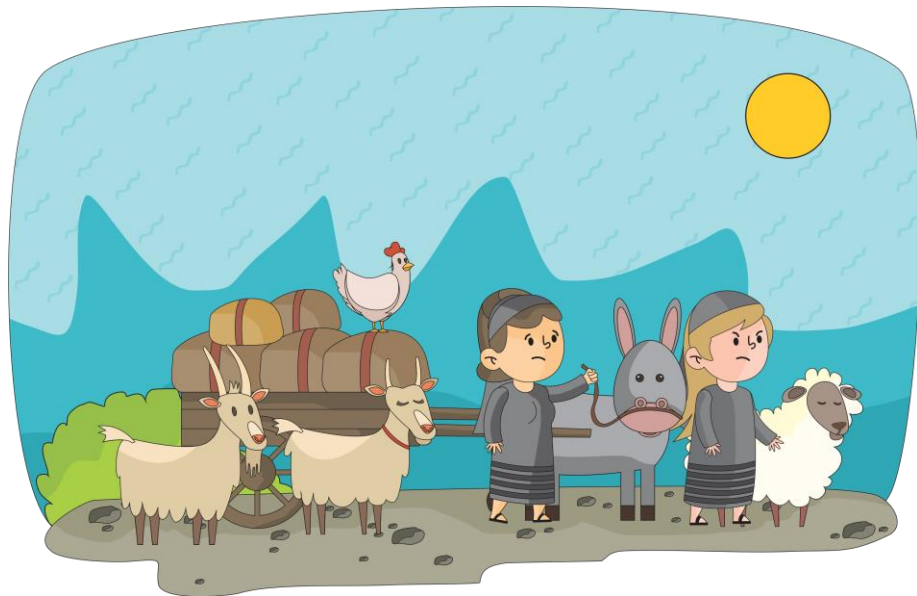
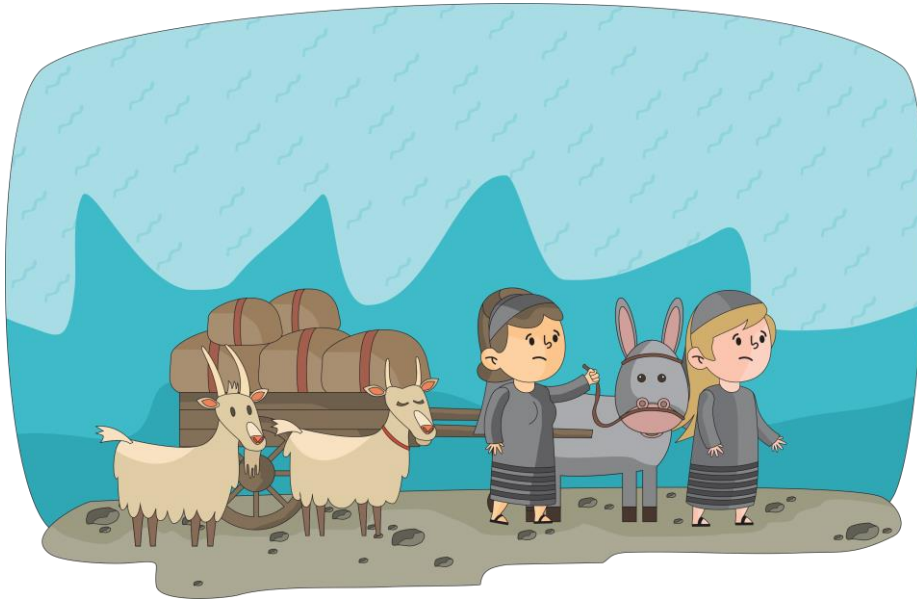
Ruth did not abandon her mother-in-law Naomi and told her that from now on she would accept her Elohim and her people.



Naomi returned to Bethlehem and said that she would no longer be called "Naomi" but "Rachel".



Find the 7 differences.



Complete the following verses:

But Ruth said: "Entreat me not to leave you, or to turn back from following after you; for wherever you go, I will go; and wherever you lodge, I will lodge; your _____ shall be my people, and your Elohim, my _____."

Rut (Ruth) 1:16

So _____ returned, and _____ the Moabite her daughter-in-law with her, who returned from the country of Moab. Now they came to _____ at the beginning of barley harvest. **Rut (Ruth) 1:22**

With the help of an adult, read from the Scriptures.
Rut (Ruth) 2:1-23



Sort the letters to form words.

O B Z A

L E Y A R B

E H W A Y H

O A B M

Find the following words in the alphabet soup:

R	H	C	H	N	A	O	M	I	N	E	B	E
U	B	O	A	Z	I	N	E	E	S	E	J	L
T	Y	A	H	W	E	H	A	T	C	L	U	I
H	I	B	O	E	I	D	O	B	O	O	D	M
L	L	L	C	W	I	D	O	W	H	H	A	E
E	L	E	A	A	R	I	E	N	T	I	H	L
N	O	S	U	G	L	E	A	N	A	M	G	E
O	R	S	S	O	T	P	A	G	E	A	A	C
L	P	E	T	E	F	I	E	L	D	D	L	H
H	A	D	O	M	E	H	E	L	H	T	E	B
A	H	B	A	R	L	E	Y	L	A	M	A	E
M	O	N	C	U	B	N	O	I	L	I	H	C

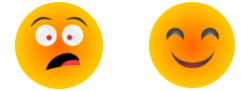
- RUTH
- NAOMI
- ELIMELECH
- MAHLON
- CHILION
- BOAZ
- ORPAH
- BARLEY
- BETHLEHEM
- JUDAH
- GLEAN
- ELOHIM
- YAHWEH
- BLESSED
- WIDOW
- FIELD

Circle the smiley face if the verse is correct or the surprised face if it is false.

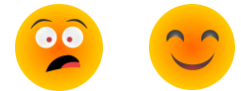
There was a relative of Naomi's husband, a man of great wealth, of the family of Elimelech. His name was Boaz. **Rut (Ruth) 2:1**



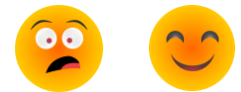
And Boaz said to Ruth, Hearken, my daughter, go and glean in another field, and depart from here; lest thou be with my maids. **Rut (Ruth) 2:8**



And when she rose up to glean, Boaz commanded his young men, saying, "Let her glean even among the sheaves, and do not reproach her." **Rut (Ruth) 2:15**



So she was with the maids of Boaz gleaning, until the barley harvest and the wheat harvest were finished; and she lived with the maids. **Rut (Ruth) 2:23**



Help Ruth and Naomi get to Bethlehem of Judah.



**But Ruth said: “Entreat me not to
leave you, or to turn back from
following after you; for wherever
you go, I will go; and wherever you
lodge, I will lodge; your people
shall be my people, and your
Elohim, my Elohim.”**

Rut (Ruth) 1:16